

Portable Davit Crane 5PT20

Product information



907 kg capacity portable Davit Crane

- Load ratings up to 907 kg portable, heaviest part component 34,0 kg
- Rugged and affordable
- Manual or power winch operation (E2)
- 360° rotation
- Boom adjustable to meet wide range of height and reach combinations
- Easy, No-Tools Assembly/Disassembly (all individual components less than 34,0 kg)
- Variety of bases
- 2-Year warranty
- Proof of load 125% of WLL (Optional)

Machinery directive: 2006/42/EC as amended by Directive 95/16/EC.

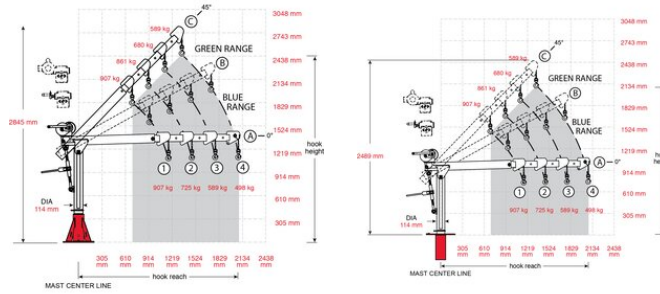
Marking: CE-marked

Finish: Powder coat

Note: Five corrosion-resistant surfaces (powder coating (5PT20), galvanized (5PT20G), stainless 304 (S) and 316 (S316) and three layers of epoxy)

Portable Davit Crane 5PT20

Blueprint



Technical data

Part code	Code	WLL ton	Weight kg	Delivery time
60115PT20M1	5PT20-M1	0.907	109.5	10
60115PT20GM1	5PT20G-M1	0.907	109.5	10
60115PT20SM3	5PT20S-M3	0.907	109.5	10
60115PT20M2	5PT20-M2	0.907	116	10
60115PT20GM2	5PT20G-M2	0.907	116	10
60115PT20E2	5PT20-E2	0.907	135.5	10

Commander 2000, 5PT20 with Pedestal Base



* Optional Base extension can provide 380mm more hook height

Commander 2000, 5PT20 with Flush or Wall base