

Portable Davit Crane 5PT10

Product information



544 kg capacity portable Davit Crane

- Load ratings up to 544 kg
- Portable, heaviest component 16,3 kg
- Rugged and affordable
- Manual or power winch operation (E2)
- 360° rotation
- Boom adjustable to meet wide range of height and reach combinations
- Easy, No-Tools Assembly/Disassembly (all individual components less than 16.5 kg)
- Variety of bases
- 2-Year warranty
- Proof of load 125% of WLL (Optional)

Machinery directive: 2006/42/EC as amended by Directive 95/16/EC.

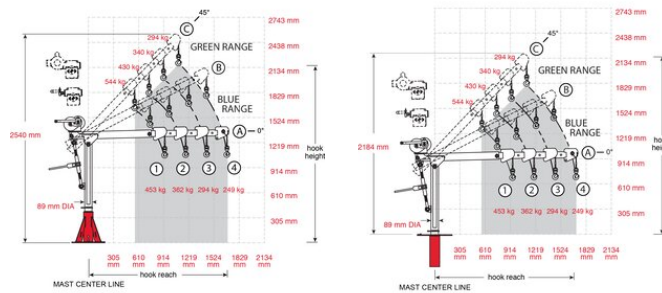
Marking: CE-marked

Finish: Powder coat

Note: Five corrosion-resistant surfaces (powder coating (5PT20), galvanized (5PT20G), stainless 304 (S) and 316 (S316) and three layers of epoxy)

Portable Davit Crane 5PT10

Blueprint



Technical data

Part code	Code	WLL ton	Weight kg	Delivery time
60115PT10	5PT10	0.54	56	10
60115PT10M1	5PT10-M1	0.544	68.5	10
60115PT10GM1	5PT10G-M1	0.544	68.5	10
60115PT10SM3	5PT10S-M3	0.544	68.5	10
60115PT10M2	5PT10-M2	0.544	74.5	10
60115PT10GM2	5PT10G-M2	0.544	74.5	10
60115PT10E2	5PT10-E2	0.544	94	10

Commander 2000, 5PT10 with Pedestal Base

