

## Portable Davit Crane 5PF5

### Product information



### 225 kg capacity portable Davit Crane

- Load ratings up to 385 kg
- Portable, heaviest part 13,2 kg
- Rugged and affordable
- Manual or power winch operation (E2)
- 360° rotation
- Boom adjustable in three positions
- Easy, No-Tools Assembly/Disassembly (all individual components less than 13,5 kg)
- Variety of bases
- 2-Year warranty
- Proof of load 125% of WLL (Optional)

Machinery directive: 2006/42/EC as amended by Directive 95/16/EC.

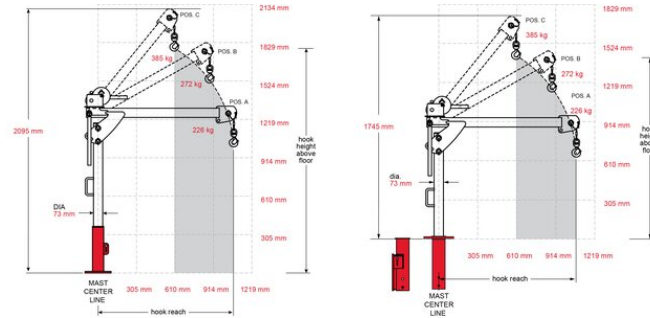
**Marking:** CE-marked

**Finish:** Powder coat

**Note:** Five corrosion-resistant surfaces (powder coating (5PT20), galvanized (5PT20G), stainless 304 (S) and 316 (S316) and three layers of epoxy)

## Portable Davit Crane 5PF5

### Blueprint



### Technical data

Part code	Code	WLL ton	Weight kg	Delivery time
60115PF5M1	5PF5-M1	0.225	34.5	10
60115PF5GM1	5PF5G-M1	0.225	34.5	10
60115PF5E2	5PF5-E2	0.225	65.5	10
60115PF5SM3	5PF5S-M3	0.385	38	10
60115PF5M2	5PF5-M2	0.385	46	10
60115PF5GM2	5PF5G-M2	0.385	46	10

### First Mate, 5PF5, with Pedestal Base

Boom Position	Load Rating (KG)	Hook Reach (mm)	Hook height (mm)*
A	225	1066	1016
B	225	889	1524
C	225	609	1778

\* Optional Base extension can provide 380mm more hook height

### First Mate, 5PF5 with Flush or Wall base

Boom Position	Load Rating (KG)	Hook Reach (mm)	Hook height (mm)*
A	225	1066	660
B	225	889	1168
C	225	609	1422

\* Optional Base extension can provide 380mm more hook height