

## Lifting Eye Nut DIN 582 Electro Galvanized

### Product information



**Material:** Steel C15E

**Marking:** According to standard, WLL, manufacturer C15, thread & CE

**Finish:** Electro galvanized.

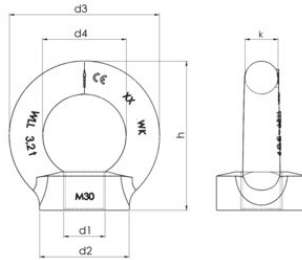
**Standard:** DIN 582

**Warning:** The lifting eyes shall be screwed tight against the surface. When two lifting eyes are used their mutual position shall result in the two eyes at the same level. Larger angle between the slings than 90° are not tolerated. Lifting eyes can not be assembled against a surface that differ essentially from a surface perpendicular to the direction of the lift.

**Safety factor:** 6:1

## Lifting Eye Nut DIN 582 Electro Galvanized

### Blueprint



### Technical data

Part code	WLL ton	Thread	d1 mm mm	d2 mm mm	d3 mm mm	d4 mm mm	h mm mm	k mm mm	Weight kg/100pc	Delivery time
421100090070	0.85	M18	M18	40	72	40	71	16	36	2
421100140070	1.4	M22	M22	50	90	50	90	20	72	10