

Lifting Eye Bolt C803

Product information



Lifting eye bolt to be screwed by hand.

Material: Alloy steel 8.8.

Marking: CE-marked, Marked with WLL, sizes, steel quality, producer name, traceability.

Finish: Red painted.

Note: Approved for lifting.

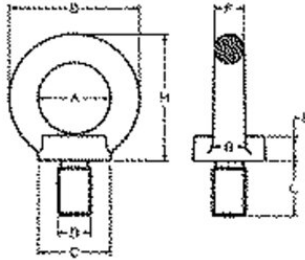
Warning: The lifting eye bolts shall be screwed tight against the surface. When two lifting eyes are used their mutual position shall result in the two eyes at the same level. Larger angle between the slings than 90° are not tolerated. Lifting eye bolts can not be assembled against a surface that differs essentially from a surface perpendicular to the direction of the lift

Safety factor: 4:1

Grade: 8

Lifting Eye Bolt C803

Blueprint



Technical data

Part code	WLL ton	Thread mm	A mm	B mm	C mm	Emm mm	Fmm mm	Hmm mm	L mm	Weight kg	Delivery time
421100040100	0.4	M6	25	45	25	10	10	45	13	0.09	2
421100080100	0.8	M8	25	45	25	10	10	45	13	0.09	2
421100100100	1	M10	25	45	25	10	10	45	17	0.11	2
421100160100	1.6	M12	35	63	35	14	14	62	21	0.27	2
421100300100	3	M14	35	63	35	14	14	62	21	0.29	10
421100400100	4	M16	35	63	35	14	14	62	27	0.31	2
421100500100	5	M18	50	90	50	20	20	90	27	0.84	10
421100600100	6	M20	50	90	50	20	20	90	30	0.86	2
421100700100	7	M22	50	90	50	20	20	90	36	0.9	10
421100800100	8	M24	50	90	50	20	20	90	36	0.9	2
421101000100	10	M27	60	108	65	24	24	109	45	1.66	10
421101200100	12	M30	60	108	65	24	24	109	45	1.7	2
421101600100	16	M36	70	126	75	26	28	128	54	2.15	10
421102400100	24	M42	80	144	85	30	32	147	63	4.15	10
421103200100	32	M48	90	166	100	35	38	168	68	6.2	10