

Stainless Lifting Eye Nut DIN 582

Product information



Lifting eye nut for common purposes.

Only approved for lifting as an integrated part of a machine (Machine Directive). For other purposes, the next size WLL must be used.

User information

Eyebolts/eyenuts to this standard are intended as permanent attachments on equipment such as motors, control cabinets, gear boxes, etc.

The values given for eyebolts/eyenuts used with double-strand slings (cf. table line 2) apply only if the angle between each sling branch and the vertical does not exceed 45°. Larger angles and any lateral loading of eyebolts/eyenuts should be avoided.

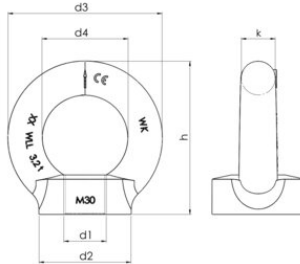
Material: AISI 316

Marking: According to standard

Standard: DIN 582

Stainless Lifting Eye Nut DIN 582

Blueprint



Technical data

Part code	WLL ton	Thread	d1 mm mm	d2 mm mm	d3 mm mm	d4 mm mm	h mm mm	k mm mm	Weight kg/100pc	Delivery time
421100010130	0.14	M8	M8	20	36	20	36	8	5	2
421100020130	0.23	M10	M10	25	45	25	45	10	9	2
421100030130	0.34	M12	M12	30	54	30	53	12	16	2
421100070130	0.7	M16	M16	35	63	35	62	14	24	2
421100120130	1.2	M20	M20	40	72	40	71	16	36	2
421100180130	1.8	M24	M24	50	90	50	90	20	72	10