

Electric Wire Rope Winch 1SA 200/300

Product information



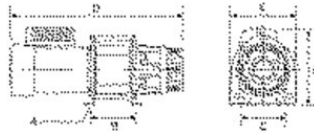
- Positive retention of wire rope on to drum
- Electromagnetic spring-applied fail safe brake
- Effective pull height 29 m
- Heavy duty high efficiency ball bearing on all running surfaces
- Planetary gearing for maximum mechanical efficiency
- Enclosed drum flanges
- Heavy duty IP65 waterproof switch with emergency stop
- Only for pulling
- Test and CE-certificate enclosed
- 1 Phase 230 V 50 Hz

Note: Including wire (pulling length).

Warning: Not approved for lifting.

Electric Wire Rope Winch 1SA 200/300

Blueprint



Technical data

Part code	Rope Ø mm	Pulling length m	Motor kW	Wire speed m/min	Capacity ton	A mm	B mm	C mm	D mm	Emm mm	Fmm mm	Hmm mm	Gø mm mm	Weight kg	Delivery time
54061SA200	6	29	0,8	10-15	0,2	4xØ10,5	142	142	510	210	246	104	94	36	10
54061SA300	7	29	1,5	10-15	0,3	4xØ10,5	172	142	540	210	246	134	90	49	10