

Solid Wire Rope Thimble Crosby S-412

Product information



Fits pin for open wire rope socket, boom pendant clevis and wedge socket.

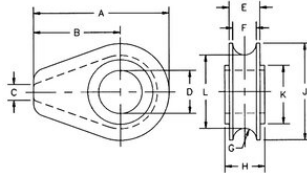
Features: Greater protection against wear and deformation of the wire rope eye giving longer service life.

Material: Cast Ductile Iron.

Marking: Manufacturer's symbol.

Solid Wire Rope Thimble Crosby S-412

Blueprint



Technical data

Part code	Diameter mm	Rope Ø range mm	A mm	B mm	C mm	D mm	D tolerance mm	Emm mm	Fmm mm	Gmm mm	Hmm mm	Jmm mm	Kmm mm	L mm	Weight kg	Delivery time
123101600220	0	16	119	76	9.65	33.3	+4%	26.9	20.6	10.4	28.7	86	57	65	1	10
123101300220	-	13	71.5	44.5	6.35	26.9	+5%	19.1	14.2	7.1	22.4	54	41.4	39.6	0.28	10
123102000220	-	18-20	119	76	9.65	38.1	+3%	26.9	20.6	10.4	35.1	86	57	65	1.05	10
123102200220	-	22	154	97	12.7	44.5	+3%	35.1	26.9	13.5	41.4	114	82.5	87.5	2.47	10
123102600220	-	24-26	154	97	12.7	54	+3%	35.1	26.9	13.5	46	114	82.5	87.5	2.38	10
123103000220	-	28-30	184	116	16	60.5	+2%	44.5	33.3	16.8	52.5	137	98.5	103	4.21	10
123103500220	-	32-35	184	116	16	67	+2%	49.3	38.9	19.8	58.5	137	98.5	105	4.45	10