

Bow Shackle POWERTEX PBSP-a

Product information



Bow type shackle PBSP is a high quality shackle intended for use in demanding environments.

It is supplied with a screw pin for quick and easy opening.

The shackle comply to EN 13889, AS 2741 and meets the performance requirements of US Federal Specification RR-C-271 Type IVA Class 2, Grade A.

Features:

- Safe – All POWERTEX shackles are manufactured and tested in accordance to EN 13889
- All bodies and screw pins marked with batch number for traceability
- Larger sizes equipped with arrows to indicate 45 degrees to vertical
- Raised pad for dedicated and easy individual ID (3,25 t and up)
- The bow is forged in closed dies
- All parts are made from alloy steel being quenched and tempered
- All parts including screw pins and nuts are hot dip galvanized for long life
- High quality hot dip galvanization process giving an exclusive mat grey finish
- Screw pins are additionally painted in blue and red for quick and easy detection as original POWERTEX parts
- Multilanguage user manuals

... [Read more](#)

Material: Forged alloy steel, supplied with alloy screw pin.

Marking: According to standard, CE-marked, POWERTEX (PT or PTEX) , WLL, size, grade and batch number.

Temperature range: -40°C up to +200°C

Finish: All parts hot dip galvanized. Bolt additional powder painted.

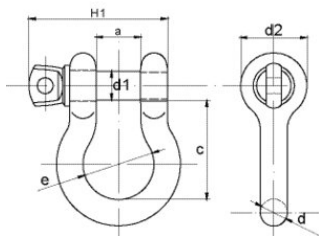
Standard: EN 13889

Safety factor: 6:1

Grade: 6

Bow Shackle POWERTEX PBSP-a

Blueprint



Technical data

Part code	WLL ton	Width mm	Size inch	a* mm	c* mm	d mm	d1 mm	d2 mm	e mm	H1 mm	Weight kg
11.31PBSP00033	0.33	10-20	3/16	10	22.6	5	6.3	14.5	15.5	29	0.026
11.31PBSP00050	0.5	-	1/4	13	29	6.5	8	17.5	20	38	0.048
11.31PBSP00075	0.75	-	5/16	13.5	31	8	9.5	21	21.5	42.5	0.082
11.31PBSP00100	1	-	3/8	17	36.5	10	11.2	25	26.2	51.5	0.15
11.31PBSP00150	1.5	-	7/16	18.5	42.9	11.3	12.7	27	29.5	58	0.2
11.31PBSP00200	2	-	1/2	20.6	47.75	12.7	15.8	30.5	33.3	67	0.3
11.31PBSP00325	3.25	-	5/8	27	60	16	18.6	40	43	85	0.65
11.31PBSP00475	4.75	-	3/4	32	71.5	19	22	48	51	98.5	1.01
11.31PBSP00650	6.5	-	7/8	37	84.5	22	25	54	58	114	1.5
11.31PBSP00850	8.5	-	1	43.5	96.25	26.5	28	60	68.5	129.5	2.25
11.31PBSP00950	9.5	-	1-1/8	48	109	29	32	68	75	144	3.25
11.31PBSP01200	12	-	1-1/4	53	120.5	32	35	76	84	157	4.45
11.31PBSP01350	13.5	-	1-3/8	59	134	35	38	84	94	171	5.95
11.31PBSP01700	17	-	1-1/2	62	148.5	38	42	92	99	186	7.72
11.31PBSP02500	25	-	1-3/4	75	178	45	50	106	128	227	12.64
11.31PBSP03500	35	-	2	84	197.5	52	55	122	148	253	18.72
11.31PBSP05500	55	-	2-1/2	107	269.5	66	70	145	186	318	37