

Bow Shackle POWERTEX PBSB

Product information



The POWERTEX Bow Shackle PBSB is a high-strength lifting shackle designed for demanding industrial environments. Supplied with a hexagon head safety bolt, nut, and stainless steel cotter pin, it provides a secure connection for overhead lifting and rigging.

The bow shape allows for multi-directional loading, making it suitable for use with slings, chains, and wire rope assemblies. Manufactured from quenched and tempered alloy steel and hot dip galvanized, it is built for reliable daily use in construction, manufacturing, offshore, and heavy maintenance operations.

It complies with EN 13889, AS 2741 (generally), ASME B30.26, and meets the performance requirements of the US Fed. Spec. RR-C-271.

Choose the PBSB safety bolt version when:

- The shackle will remain in place for longer periods
- Vibrations or dynamic loads could cause a screw pin to rotate
- Higher safety assurance is required as part of site procedures
- You need clear traceability and batch identification for audits

Product benefits

- **Safety bolt with nut and stainless steel cotter pin**
Provides a mechanically secured connection that reduces the risk of accidental loosening under vibration or dynamic loads.
- **Wide operating temperature range from -40°C up to +200°C**
Suitable for both cold outdoor conditions and warm industrial environments, giving predictable performance across a wide range of applications without changing lifting equipment.
- **Forged alloy steel, quenched and tempered, Grade 6**
Delivers consistent strength and predictable performance in demand ... [Read more](#)

Material: Forged alloy steel, supplied with safety bolt and nuts. Stainless steel retaining pins.

Marking: According to standard, CE-marked, POWERTEX (PX or PTEX), WLL, size, grade and batch number.

Temperature range: -40°C up to +200°C

Finish: All parts hot dip galvanized + head-bolt and nut additional powder painted.

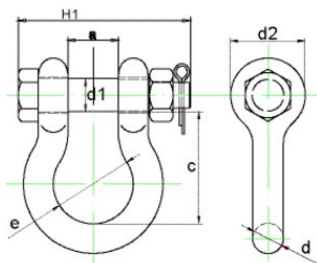
Standard: EN 13889

Safety factor: 6:1

Grade: 6

Bow Shackle POWERTEX PBSB

Blueprint



Technical data

Part code	WLL ton	EWL mm	Size inch	a* mm	c* mm	d mm	d1 mm	d2 mm	e mm	H1 mm	Weight kg
420100050860	0.5	29	1/4	13	29	6.5	8	17.5	20	42.5	0.05
420100080860	0.75	31	5/16	13.5	31	8	9.5	21	21.5	47	0.1
420100100860	1	37	3/8	17	37	10	11.2	25	26.2	56.5	0.15
420100150860	1.5	43	7/16	18.5	43	11.3	12.7	27	29.5	63.5	0.22
420100200860	2	48	1/2	20.6	48	12.7	15.8	30.5	33.3	75.5	0.36
420100330860	3.25	60	5/8	27	60	16	18.8	40	43	92	0.76
420100480860	4.75	72	3/4	32	72	19	22	48	51	106	1.2
420100650860	6.5	85	7/8	37	85	22	25	54	58	120	1.8
420100850860	8.5	96	1	43.5	96	26.5	28	60	68.5	135	2.6
420100950860	9.5	109	1-1/8	48	109	29	32	68	75	143	3.8
420101200860	12	121	1-1/4	53	121	32	35	76	84	164	5.3
420101350860	13.5	134	1-3/8	59	134	35	38	84	94	182	7.2
420101700860	17	149	1-1/2	62	149	38	42	92	99	195	9.4
420102500860	25	178	1-3/4	75	178	45	50	106	128	224	15
420103500860	35	197	2	84	197	52	56	122	148	248	24
420105500860	55	270	2-1/2	107	270	66	70	145	186	302	45
420108500860	85	325	3	130	325	76	80	165	205	395	70